

GUILDFORD & MERRYLANDS

MURAL PROJECTS

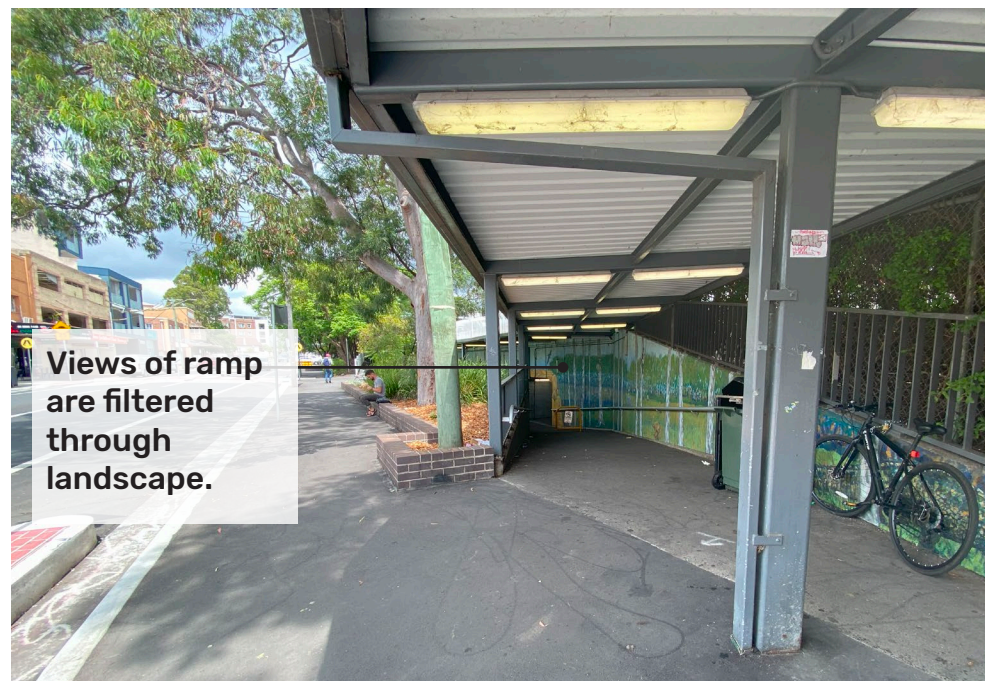
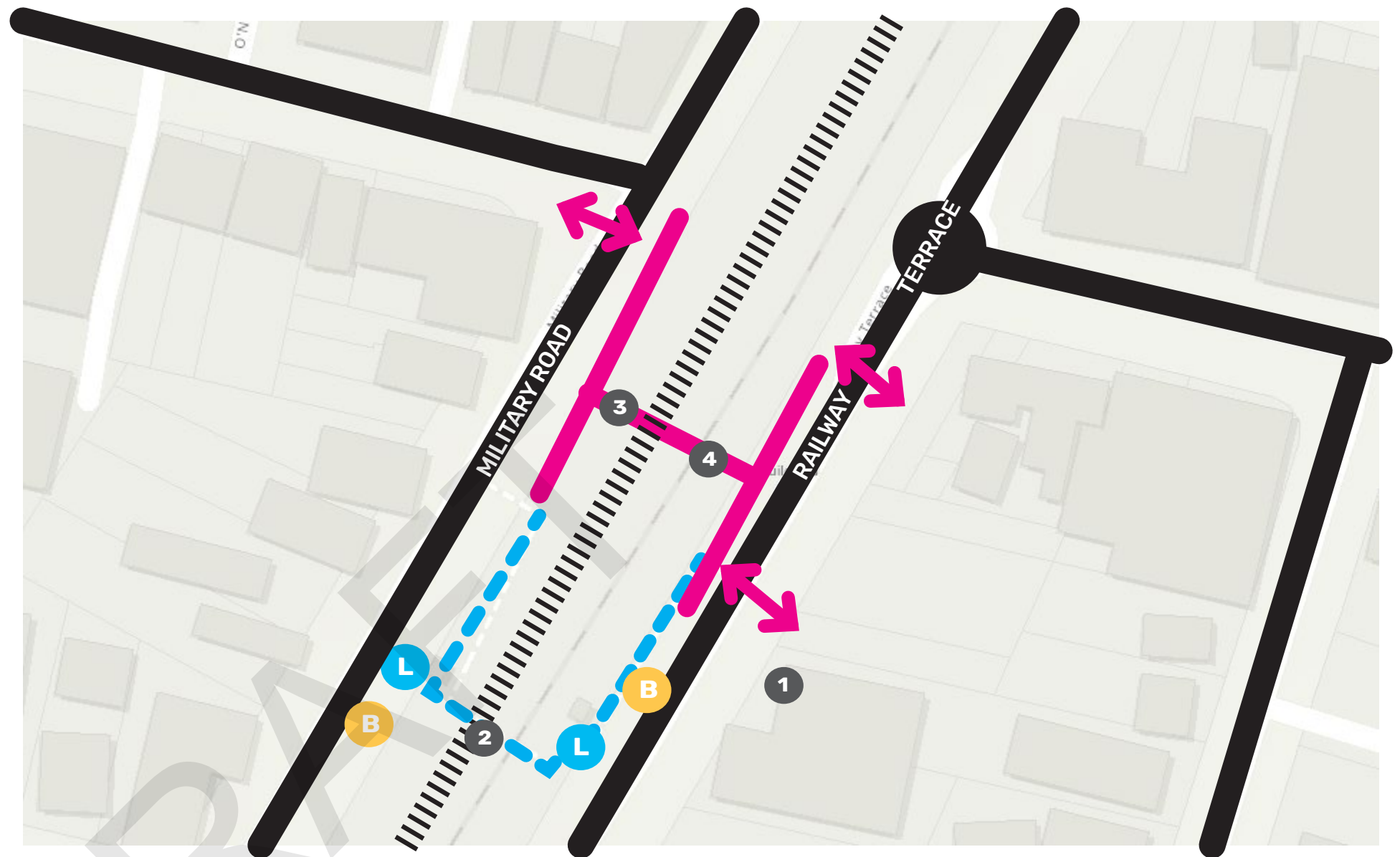
MARCH 2024

ARTSCAPE®

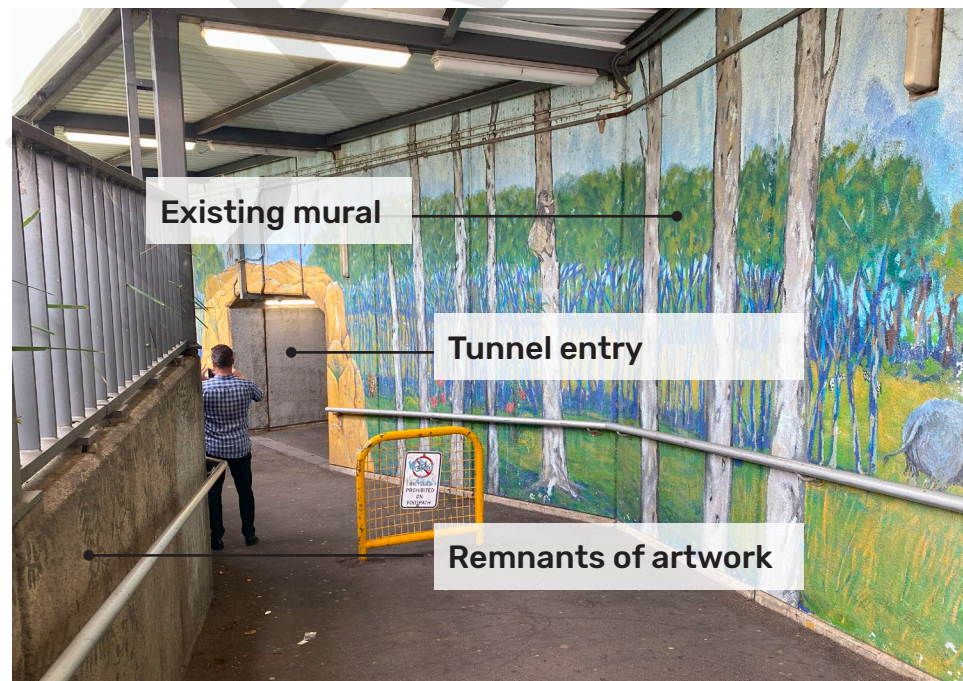
GUILDFORD TRAIN STATION TUNNEL MURAL

PUBLIC ART PLACE ANALYSIS

- 1** Shop top housing above retail overlooks the station and the entry to the tunnel. There are limited views into the tunnel from units due to the roof over the ramp and the surrounding landscape.
- 2** No views down into tunnel ramps from overhead bridge. Obstructed by trees and roof structure.
- 3** The tunnel ramps up towards exit ramps.
- 4** Guildford is a longer tunnel than Merrylands and has poor natural light.
- L** Lifts are located on both sides of the rail line, away from the tunnel and ramps.
- B** Bus stops are located away from the tunnels and ramps.



Entry to the tunnel from Railway Terrace on the eastern side of station. Tunnel entry is darker due to roof structure. Views of ramp and tunnel are filtered through landscaping.



Tunnel entry. Mural is currently on one side of the wall. Some artworks are present on the opposite side yet are faded.



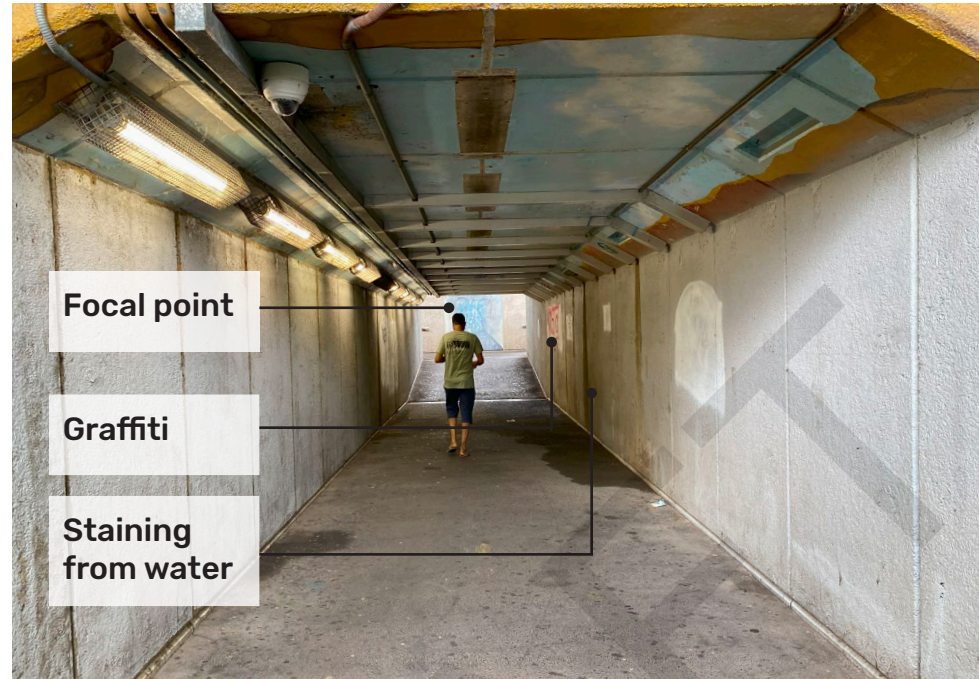
Views up ramp. Beyond is another ramp that leads to the overhead pedestrian bridge and platform access.

GUILDFORD TRAIN STATION TUNNEL MURAL

PUBLIC ART PLACE ANALYSIS



Tunnel looking west. Tunnel is XX long and previous murals, painted on panels have been removed and walls painted white. Roof retains former mural design. Lights have been relocated to the left corners. Some lights are not working resulting in gaps in lighting. Future creative lightning is strongly recommended.



Focal point shifts as the tunnel ramps up. This means its not fully visible in the tunnel. Focal point shows destination and exit and should be distinct from the rest of the tunnel. Graffiti is generally on the side of the tunnel away from the light where there would be more concealment at night.



Graffiti painted over and then graffitied again. Staining is visible in this image. The water is not able to be stopped and the stain cannot be removed.



Entry to the tunnel from the eastern side of the rail line looking west. Many of the existing murals have eyes which create the perception of being watched.



Ramp heading south to the entry to the station, on the western side of the rail line. Mural is on both sides of the ramp. The roof covering the ramp reduces light however, this side of the tunnel is brighter, likely due to the brighter coloured murals and lack of landscape between the footpath and the ramp.

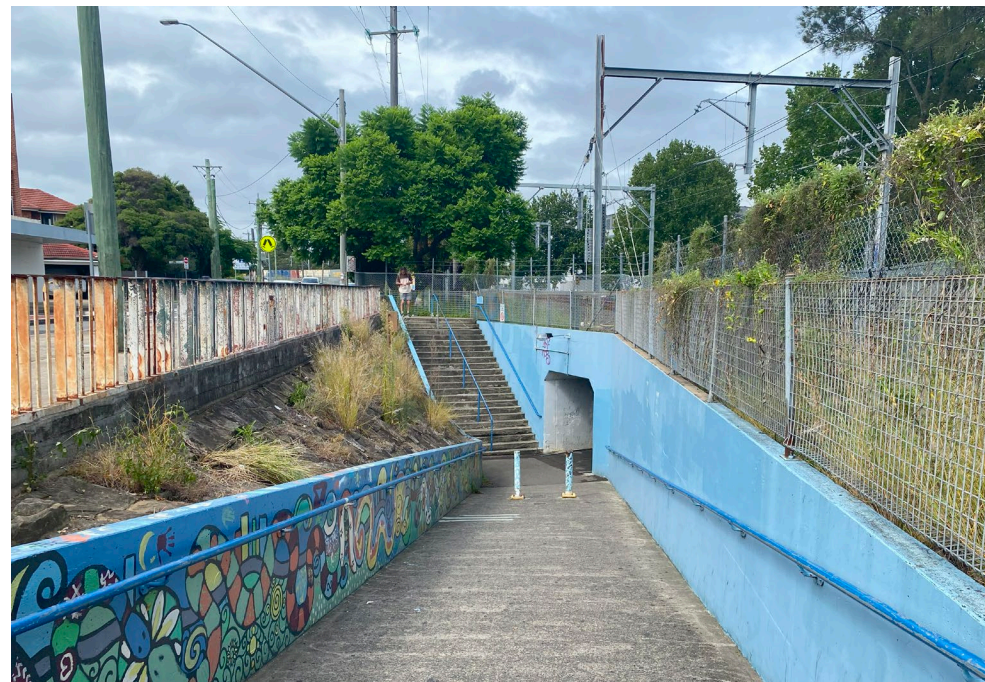
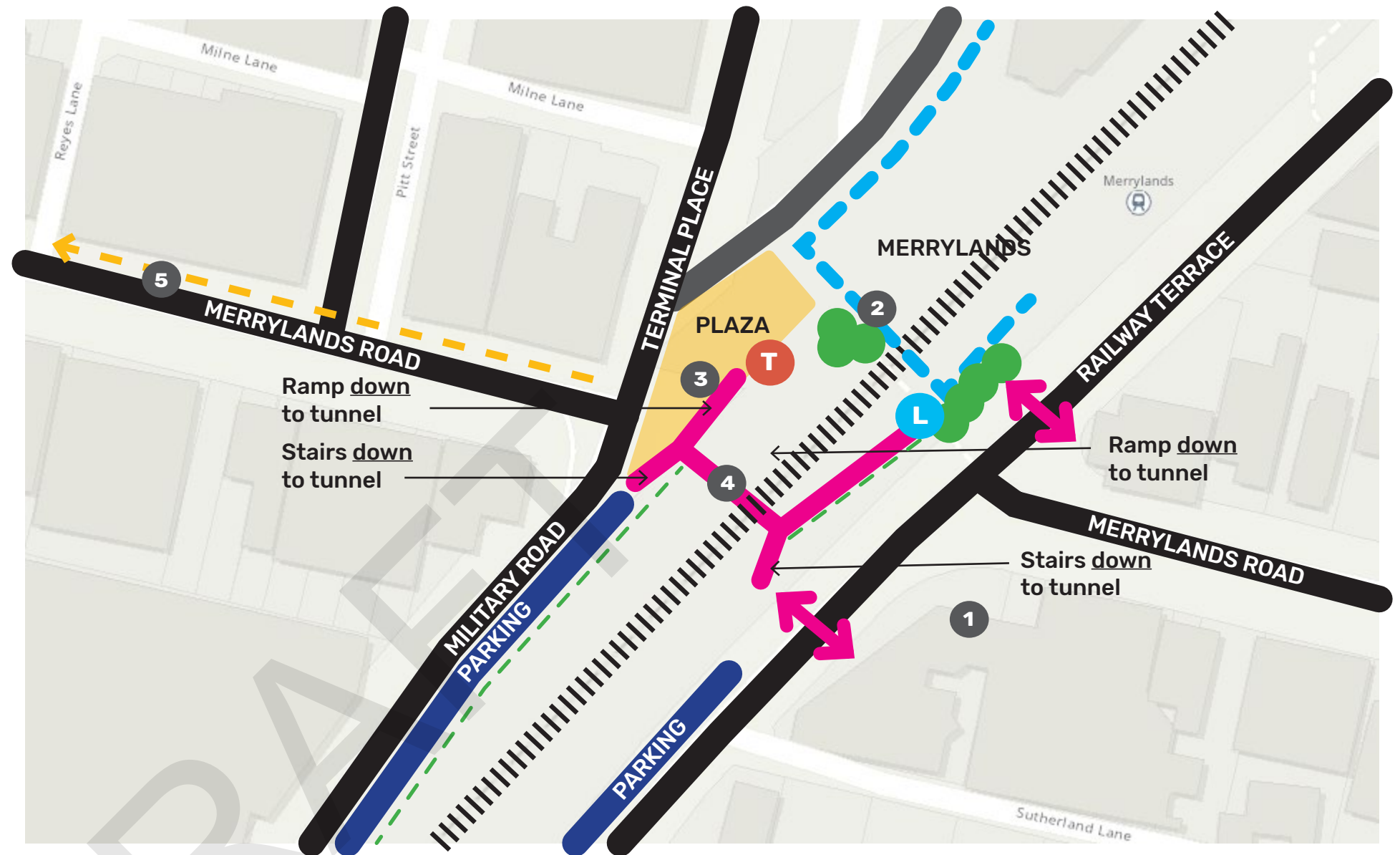


Ramp heading north, on the western side of the rail line. Mural is on both sides of the ramp. The roof covering the ramp reduces lighting, however, this side of the tunnel is brighter likely due to the brighter coloured murals, the lack of landscape between the footpath and the ramp and the western aspect.

MERRYLANDS TRAIN STATION TUNNEL MURAL

PUBLIC ART PLACE ANALYSIS

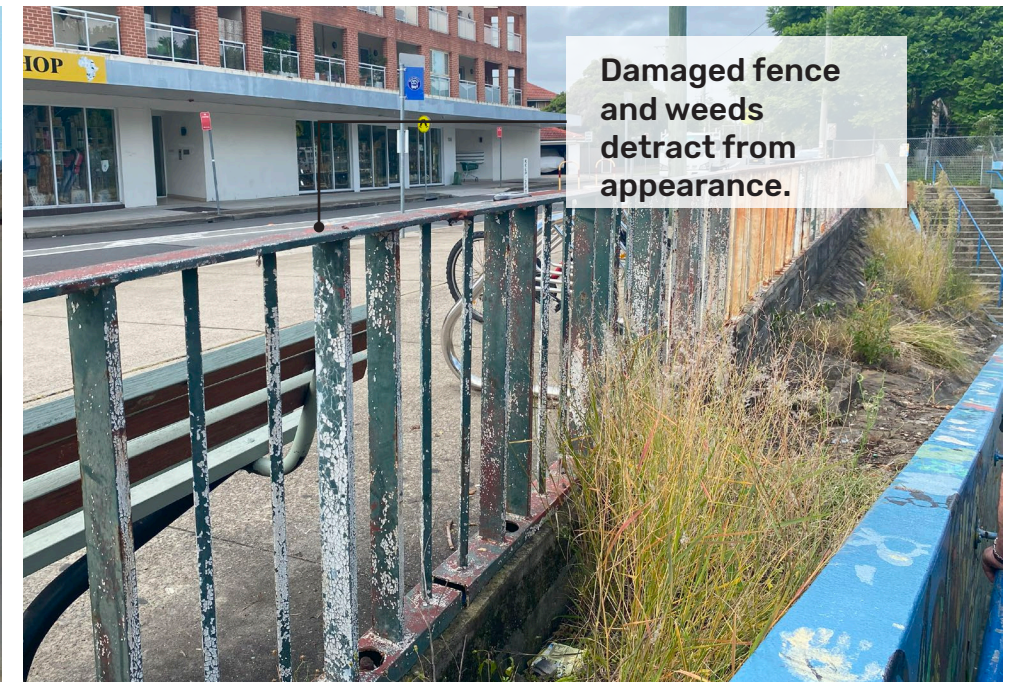
- 1 Shop top housing above retail overlooks the station and the entry to the tunnel. There may be some views into the tunnel from units as it has no obstructing roof, buildings or landscape.
- 2 No views down into tunnel ramps from overhead bridge. Obstructed by trees.
- 3 External light in plaza may illuminate parts of the tunnel but could also exacerbate contrast between light and dark.
- 4 Merrylands is a shorter tunnel than Guildford and has better natural light.
- 5 Main street of Merrylands which leads to the new plaza which links with the shopping centre.
- L Lift is located at the end of the ramp and the artwork will be visible from this location.
- T Public Toilets located at the end of the western ramp. Not operating during site visit.
- - Dilapidated fence needs to be restored to improve the appearance of the area.



View down the ramp on Railway Terrace looking to the tunnel. Mural on eastern wall. Handrail (blue on east side and green on west side) has been painted and is scratched.



Looking up the stairs that connect to Railway Terrace. Weeds and grass grow in the retaining wall. Graffiti is observed above the tunnel.



Existing fence separating Railway Terrace from the ramp and stairs. Fence has been painted green and the paint is chipping. Fence is detracting from the areas appearance and needs to be repainted.

MERRYLANDS TRAIN STATION TUNNEL MURAL

PUBLIC ART PLACE ANALYSIS



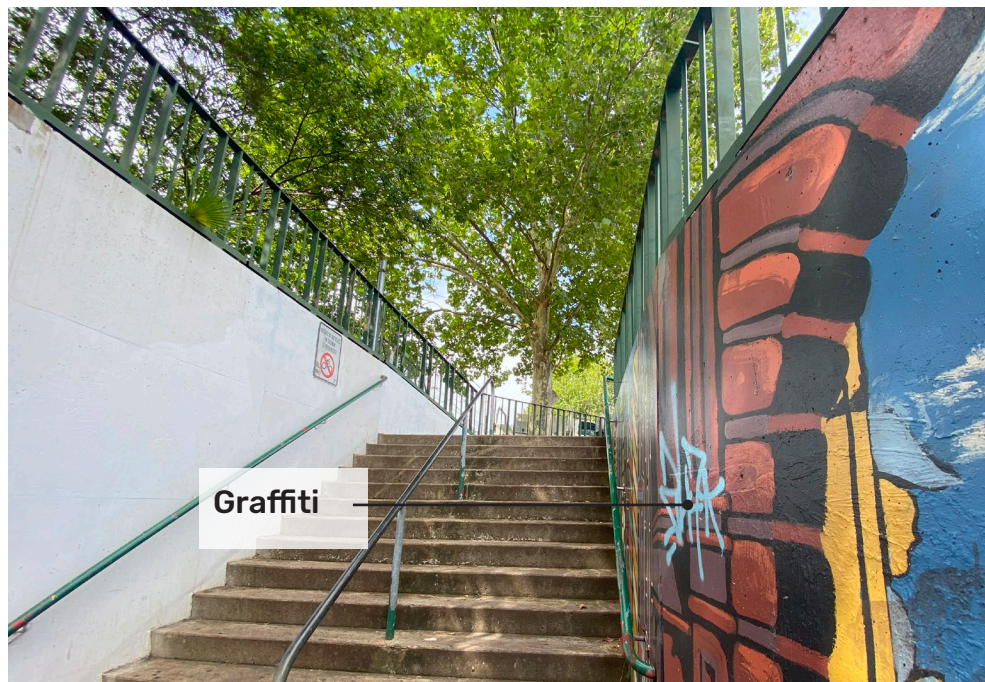
Murals wrap around low wall up ramp and stair. The street is not visible from the tunnel.



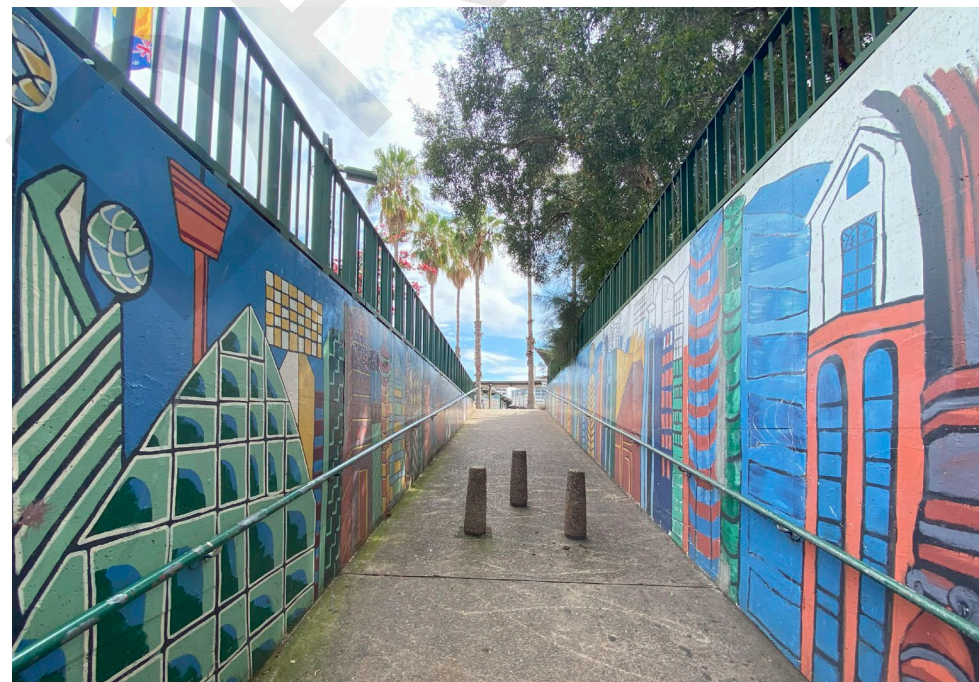
Tunnel is currently painted white which boosts lighting outputs. Any mural will naturally decrease light and needs to be capable of brightening the space. Mural at end is currently highlighting the destination. Maintaining this focal point should be considered in the tunnel mural design.



Artwork at the western end of the tunnel between stairs and ramp. Graffiti is observed on these murals.



View up stairs on the western side of the rail corridor. Existing mural is limited to one wall. It is possible the mural has been painted over in the past.



View up ramp towards plaza, train station and toilets. Mural is on both sides of the ramp, unlike the stairs.



Existing attribution for the mural. This plaque will need to be replaced or updated.