

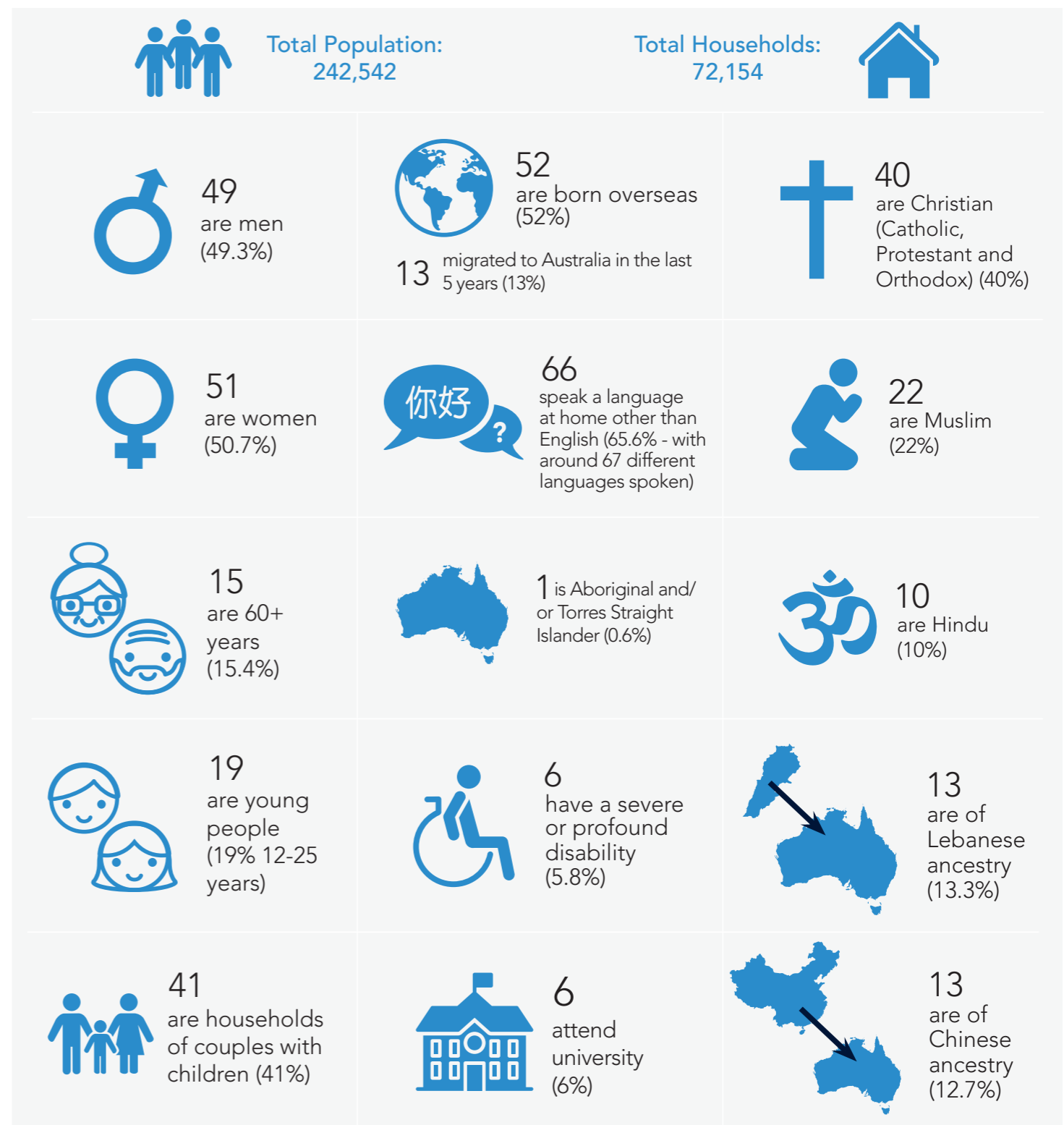
Suburb data by population and top 5 languages other than English

Suburb	Population 2016 (Census 2016)	Population projection 2036 (Forecast ID)	Top 5 languages other than English
Auburn (North)	10,872	17,518	Nepali, Mandarin, Persian/Dari, Urdu, Turkish
Auburn (South)	26,501	33,003	Arabic, Mandarin, Turkish, Cantonese, Persian/Dari
Berala	9,628	11,003	Cantonese, Mandarin, Arabic, Vietnamese, Persian/Dari
Girraween – Toongabbie	7,462	10,938	Tamil, Gujarati, Hindi, Telugu, Punjabi
Granville	11,266	12,311	Arabic, Nepali, Mandarin, Cantonese, Persian/Dari
Greystanes	25,034	24,712	Arabic, Maltese, Greek, Italian, Turkish
Guildford East	14,858	18,044	Arabic, Persian/Dari, Mandarin, Cantonese, Turkish
Guildford West - Smithfield - Woodpark	6,590	7,140	Arabic, Persian/Dari, Mandarin, Italian, Filipino/Tagalog
Lidcombe North	9,996	17,518	Korean, Cantonese, Mandarin, Nepali, Vietnamese
Lidcombe South –Rookwood	9,093	13,272	Korean, Mandarin, Cantonese, Arabic, Vietnamese
Merrylands – Holroyd	32,170	48,220	Arabic, Persian/Dari, Mandarin, Cantonese, Turkish
Merrylands West	6,973	7,786	Arabic, Persian/Dari, Mandarin, Turkish, Cantonese
Pemulwuy	3,699	5,115	Hindi, Arabic, Filipino/Tagalog, Gujarati, Persian/Dari
Pendle Hill	6,281	11,112	Tamil, Gujarati, Hindi, Telugu, Arabic
Regents Park	4,750	5,080	Arabic, Cantonese, Mandarin, Vietnamese
South Granville – Chester Hill	6,580	6,933	Arabic, Persian/Dari, Mandarin, Vietnamese, Turkish
South Wentworthville	6,205	7,944	Arabic, Mandarin, Hindi, Persian/Dari, Tamil
Wentworthville	8,135	14,964	Tamil, Gujarati, Hindi, Punjabi, Telugu
Westmead – Mays Hill	8,282	11,217	Tamil, Hindi, Telugu, Gujarati, Mandarin
Yennora	8,392	9,371	Arabic, Persian/Dari, Mandarin, Cantonese, Vietnamese



Cumberland Community Snapshot

If our community was 100 people...*



Reference: All statistics from the Australian Bureau of Statistics 2016 Census of Population and Housing (accessed on 22/09/2017) profile.id.com.au/cumberland
* Please note that all statistics have been rounded to the nearest whole number. Actual percentages are found in the following pages.

Acknowledgement of Traditional Custodians

Cumberland Council acknowledges the traditional custodians of this land, the Darug people, and pays our respect to their elders both past and present. The Darug people (also spelt Dharug, Daruk or Dharik) have over 60,000 years of culture, history and living with the land.

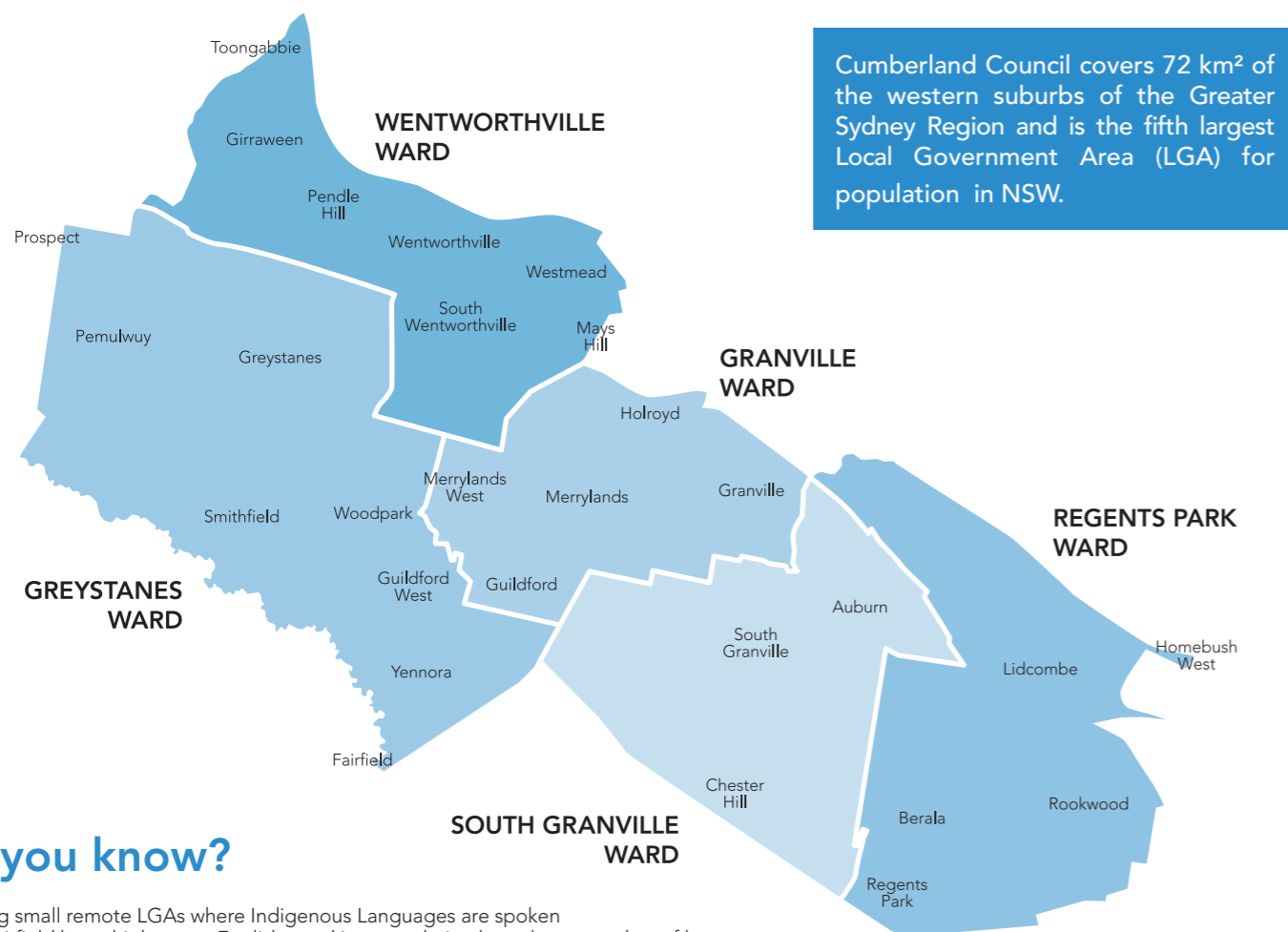
There were three distinct dialects in the Darug territory: The coastal (also known as the Eora), the Hinterland (or plains) and the mountains. There are many significant aboriginal sites in the area, including Prospect Hill where the first act of reconciliation between Aboriginal leaders and European settlers occurred on 3 May 1805.

Key statistics

- 29 suburbs
- 32: median age
- \$1,377: median weekly household income
- 41% of households are made up of couples with children
- 20,000+ businesses
- From 2011 to 2016, Cumberland Council area's population increased by **22,834 people (11.8%)**. This represents an average annual population change of 2.26% per year over the period.

About Cumberland Council

Cumberland Council was formed in May 2016. It is an amalgamated Council made up from most of the former Holroyd City Council, two thirds of the former Auburn City Council and the former Woodville Ward of Parramatta City Council.



Cumberland Council covers 72 km² of the western suburbs of the Greater Sydney Region and is the fifth largest Local Government Area (LGA) for population in NSW.

Did you know?

²Excluding small remote LGAs where Indigenous Languages are spoken
³Note: Fairfield has a higher non-English speaking population but a lower number of languages actually spoken.

⁴This increased by 4% since 2011.

⁵With more than 5 speakers, and subject to random adjustment to protect confidentiality

- Cumberland has the **second-highest percentage of people speaking a language other than English** in Australia (**65.6%**)^{2,3,4}. There are approximately **150 different languages** spoken in Cumberland⁵.
- **28.9%** (62,000 people) speak English only at home.
- Around **30%** of the language-other-than-English community were born here in Australia.
- **14.7%** of the population have poor English proficiency.

Age structure

Service age group (years)	Number	Cumberland %	Greater Sydney %
Babies and pre-schoolers (0 to 4)	16,880	7.8	6.4
Primary schoolers (5 to 11)	20,366	9.4	8.8
Secondary schoolers (12 to 17)	14,265	6.6	6.9
Tertiary education and independence (18 to 24)	22,538	10.4	9.6
Young workforce (25 to 34)	42,160	19.5	16.1
Parents and homebuilders (35 to 49)	42,969	19.9	21.1
Older workers and pre-retirees (50 to 59)	23,440	10.8	12.2
Empty nesters and retirees (60 to 69)	17,111	7.9	9.5
Seniors (70 to 84)	13,060	6.0	7.5
Elderly aged (85 and over)	3,282	1.5	2.0

Languages

Top 10 languages spoken (other than English):

1. **Arabic** - 32,772 (15.2%)
2. **Mandarin** - 13,633 (6.3%)
3. **Cantonese** - 9,810 (4.5%)
4. **Persian/Dari** - 9,679 (4.5%)
5. **Tamil** - 6,752 (3.1%)
6. **Turkish** - 6,725 (3.1%)
7. **Nepali** - 5,290 (2.4%)
8. **Korean** - 5,150 (2.4%)
9. **Hindi** - 4,895 (2.3%)
10. **Urdu** - 4,677 (2.2%)

Housing

- **51%** of the dwellings are medium or high density, compared to 40% in Greater Sydney.
- **53%** of households are purchasing or fully own their home.
- **30.9%** are renting privately.
- **7.1%** live in social housing.
- **\$408** is the median weekly rent.
- The most dominant household size is **2 persons** (23.5% of households)
- **43.4%** of the dwellings were medium or high density, compared to 44% in Greater Sydney.
- The number of **households with 6 or more people is 9.7%**, which is double the Greater Sydney percentage of 4.7%.

Religion

- At least **25 religious denominations** in Cumberland.
- The largest religious group collectively is **Christianity (40%)**.
- The top 5 religions include: **Islam (22%)**; (Roman) **Catholic (20%)**; **Hinduism (10%)**, **Anglican (5%)**, **Buddhism (4%)**.
- Overall, **78%** of the population nominated a religion.
- Cumberland has a very low rate of 'No Religion' (**13.9%**) compared to 24.9% in Greater Sydney

Household income

- Median weekly household income was \$1,377, compared to \$1,745 for Greater Sydney.
- **18%** of households earned an income of **\$2,500 or more** per week.

Education

- **58%** of people aged over 15 years had **completed Year 12** schooling (or equivalent).
- **6.1%** of people are currently attending university

Cultural diversity

- Cumberland is one of the most culturally diverse areas in Australia.
- **0.6%** of the population are **Aboriginal or Torres Strait Islander**.
- **52%** of the population was **born overseas**.
- Residents originate from **150** different countries.
- **72.4%** of the population are Australian citizens.
- **Top 10 Countries of Birth:** India (6.6%), China (6.5%), Lebanon (4.9%), Afghanistan (2.8%), Nepal (2.3%), Sri Lanka (2.2%), Vietnam (2.2%), Pakistan (2.2%), South Korea (2%) and Philippines (1.9%)

People with disability and carers

- **5.8%** (12,503) of residents reported needing help in their day-to-day lives due to severe or profound disability.
- **19,249 carers** (11.2% of the total population) provide unpaid assistance to a person with a disability, long term illness or old age.

Volunteering

- **11.1%** of the population aged 15+ report doing some form of **voluntary work**.

Refugees and people seeking asylum

- Cumberland has the highest number of people seeking asylum in NSW
- Approximately **4,662 (45%) of Bridging Visa E holders** in NSW live within the Cumberland LGA, with more half (2,370) residing in the suburbs of Auburn and Merrylands
- Over the past 25 years, over **20,000 refugees** have settled in the Cumberland area