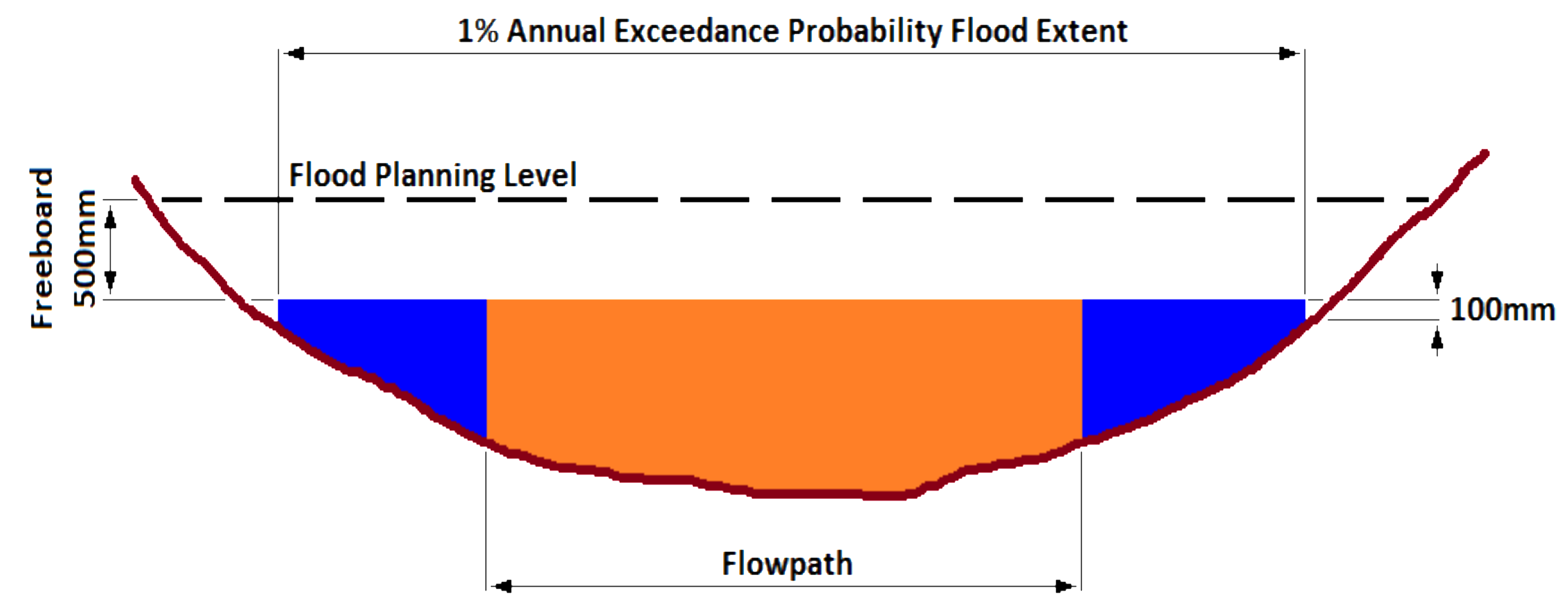
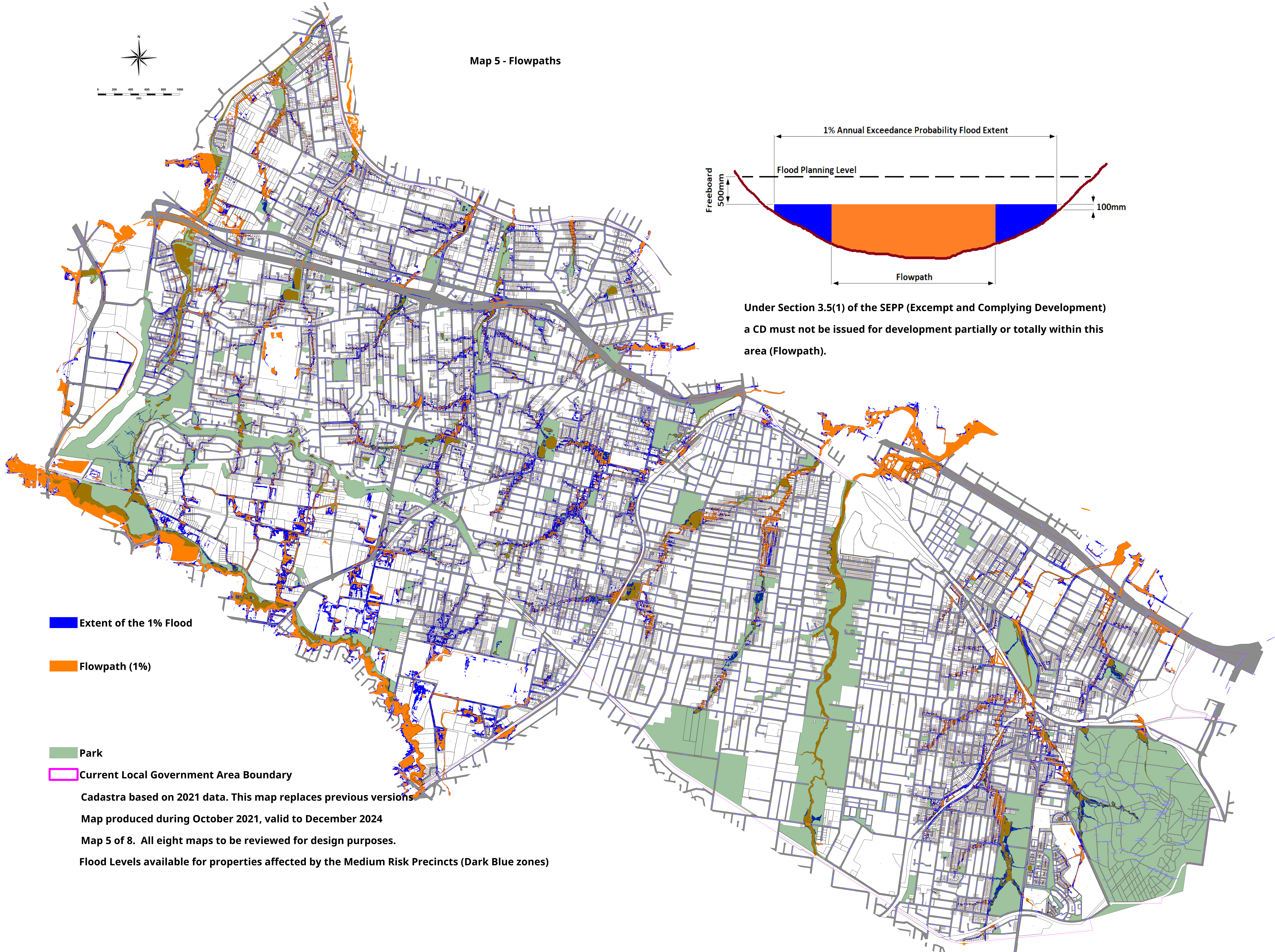
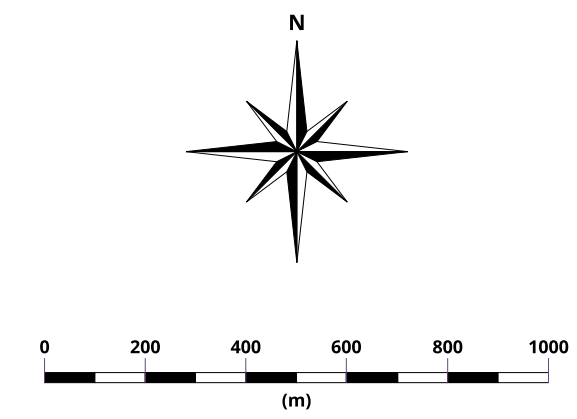


Map 5 - Flowpaths



Under Section 3.5(1) of the SEPP (Exempt and Complying Development) a CD must not be issued for development partially or totally within this area (Flowpath).

Extent of the 1% Flood

Flowpath (1%)

Park

Current Local Government Area Boundary

Cadastra based on 2021 data. This map replaces previous versions

Map produced during October 2021, valid to December 2024

Map 5 of 8. All eight maps to be reviewed for design purposes.

Flood Levels available for properties affected by the Medium Risk Precincts (Dark Blue zones)