



# TRIENNIAL REPORT

1966 — 1968

ALD. S. L. HEDGES, J.P.

*Mayor of Auburn*



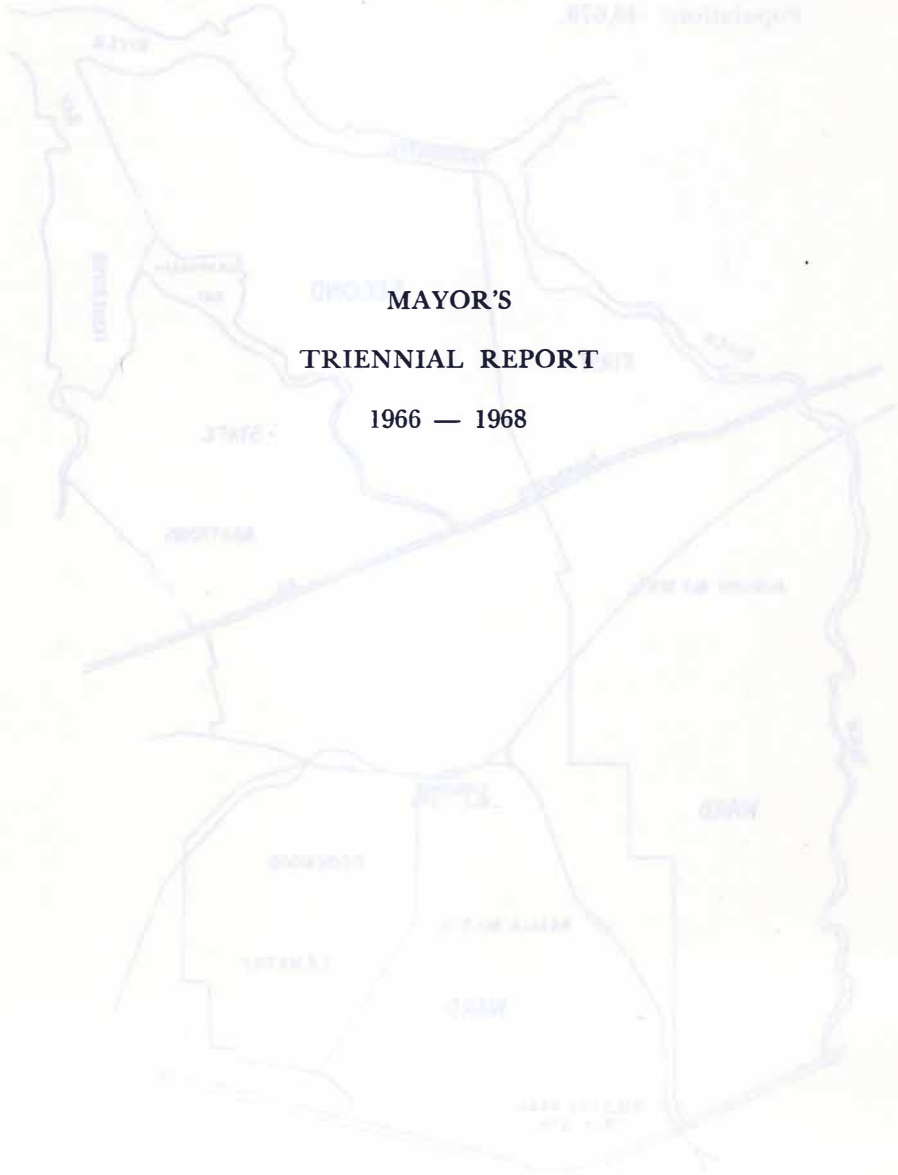
MUNICIPALITY OF AUBURN

Scale: 30 miles to an inch

Area of Municipality: 12.9 sq. miles

Mile of Roadway: 123 miles

Population: 14,678



**MAYOR'S  
TRIENNIAL REPORT**

**1966 — 1968**

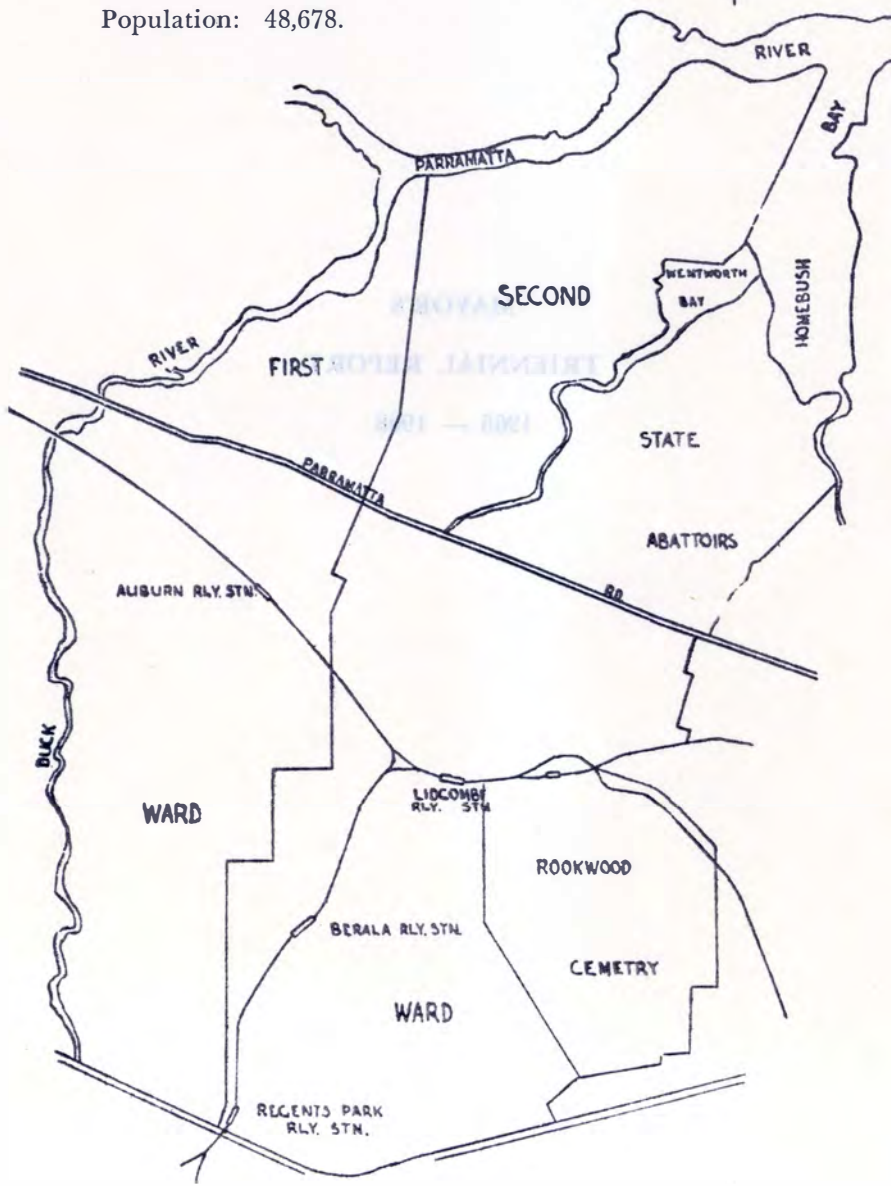
# MUNICIPALITY OF AUBURN

Scale: 70 chains to an inch.

Area of Municipality: 12.17 sq. miles.

Miles of Roadway: 123 miles.

Population: 48,678.



## INTRODUCTION

It is my pleasure as Mayor of the Municipality to present to the ratepayers and residents, this report of Council's activities over the last three years of office.

In presenting the report I pay tribute to the diligence and co-operation of my fellow Aldermen who, over the term, have unselfishly given their time to work on the various Committees of Council; some idea of the demands on an Alderman's time whilst acting in office, can be gauged by the fact that in this term the following meetings took place:

72 Ordinary Meetings — 3 Special Meetings — 72 Finance and Works Committee Meetings — 72 Building and Development Committee Meetings — 20 Meetings of various other Committees whilst countless individual and group inspections of properties took place in connection with many and varied applications.

This magnificent teamwork of the elected Aldermen enabled the development of the area to proceed in an orderly and progressive fashion.

## FINANCE

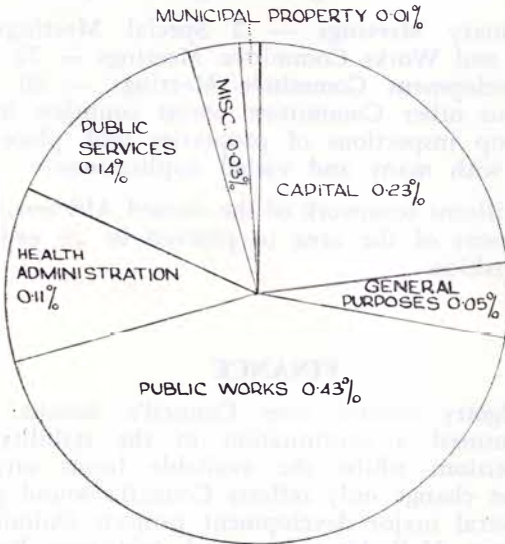
Strict budgetary control over Council's income and expenditure ensured a continuation in the stability of the financial position; whilst the available funds surplus has decreased, the change only reflects Council's sound policy in financing several major development projects (Administrative Building, Town Hall Alterations and Additions, Public Car Park, Regents Park Amenity Centre) by short term special bank advances within the general fund structure; the saving of an extensive amount of interest by this method should be quite evident and reflects the very harmonious financial relationship which Council has with its bankers—the Commonwealth Bank of Australia.

The loan expenditure over the period was \$326,371, and covered such items as public off-street car-parking facilities, acquisition of land, road and drainage construction and the erection of a Youth Centre; in addition, a loan of \$105,000 is in the process of being negotiated for expenditure in 1969 which will allow for the erection of a new workshop and works depot on Council-owned land in the Chiswick Road area.

## PARTICULARS OF INCOME AND EXPENDITURE FOR THREE YEARS 1966/68

Total expenditure for the period was \$6,738,473, the disposition of which is set out hereunder in both diagrammatic and figure form.

### % EXPENDITURE RELATED TO EACH DOLLAR



### EXPENDITURE

	1966	1967	1968	Total
	\$	\$	\$	\$
General Purposes .....	106,407	113,422	102,899	322,728
Public Works .....	978,746	981,068	935,163	2,894,977
Health Administration .....	236,059	262,002	252,756	750,817
Public Services .....	266,109	307,355	348,442	921,906
Municipal Properties .....	18,647	29,799	37,386	85,832
Miscellaneous .....	74,946	78,171	79,937	233,054
Capital .....	552,105	489,022	488,032	1,529,159
	2,233,019	2,260,839	2,244,615	6,738,473

## INCOME

	1966	1967	1968	Total
	\$	\$	\$	\$
General Purposes .....	1,501,399	1,651,532	1,746,359	4,899,290
Public Works .....	114,126	163,815	126,056	403,997
Health Administration .....	73,278	77,032	65,740	216,050
Public Services .....	78,680	88,678	85,653	253,011
Municipal Properties .....	5,172	14,210	24,360	43,742
Miscellaneous .....	20,239	32,719	16,447	69,405
Capital .....	224,875	188,131	180,000	593,006
	2,017,769	2,216,117	2,244,615	6,478,501

## PARTICULARS OF GENERAL RATE LEVY

Year	Rate in \$	U.C.V. \$	Yield \$
1966	2c	76,789,806	1,432,302
1967	2.15c	77,078,698	1,574,736
1968	1.57c	113,166,365	1,776,711

In levying General Rates it is not possible to maintain a standard relationship between total rate income and the levy in the dollar on the Unimproved Capital Value. This is reflected in various increases and decreases in the individual assessment. The fluctuation was most evident in connection with the 1968 valuation because of a disparity in values caused by inter-period valuations. With the issue of the new valuations some property assessment values remained static, whilst others decreased and some increased, nevertheless, in levying the general rate, Council endeavoured to strike a happy medium applicable to the properties in the various zones, i.e., Residential, General Industry, Special Industry and Commercial.

Worthy of note is the fact that within the triennial period, Council paid the sum of \$652,705 to statutory bodies, comprising the State Planning Authority \$77,233; Board of Fire Commissioners \$54,997 and the Department of Main Roads \$520,475. Rebates to pensioners cost \$224,194 less the Government subsidy of \$112,097. Postponement of rates under Section 160C of the Local Government Act has, as a result of the exhibition of the Municipality of Auburn Planning Scheme, been steadily growing and by the end of 1968 should reach a figure of \$34,307; under the Act this figure will substantially increase for a period of five years after which,

subject to rate levy fluctuations, it should remain fairly steady; it must of course be appreciated that properties subject to the concession, are liable for full rates if they are sold within a five year period and used for purposes other than single dwelling houses.

## PUBLIC WORKS

### Details of Expenditure:

During the period, Council was able to maintain its level of appropriation from the income for the purposes of its Public Works Expenditure, and the figures submitted hereunder compare more than favourable with those in previous triennial terms.

	Milage	Cost
Road Construction and Maintenance (including Main Roads, etc.)	approx. 20	\$1,267,049
Stormwater Drainage	" 5	168,152
Footpath Paving	" 23	244,976
Kerbing and Guttering	" 13	137,468
Bridge Construction		58,655
Street and Gutter Cleaning		154,229

The rapid growth of the industrial section of the Municipality has caused Council some concern in its endeavour to provide proper road paving and parking facilities.

Naturally enough with a limited income it has not been possible to satisfy all demands, however, over the last 5 years Council was able to appropriate from its public works vote the sum of \$232,000 for various works in the Silverwater area; of this sum \$164,194 was spent during the last three (3) years, the analysis of expenditure shows \$125,636 for road works, \$30,888 for kerbing and guttering and \$7,670 for paving.

In association with the roadworks an initial step was taken to provide angle parking for employees' cars in Fariola Street; continuation of this progressive policy by the Aldermen in the coming term will ensure that all roadwork will be completed in the industrial section of the Municipality within the minimum period possible.

### Bituminous Sealing of Roads:

In keeping with its policy of gradually increasing the bituminous sealing work so as to complete the road surface from kerb to kerb, Council, over the period, increased its expenditure on this phase of public works by \$40,000 so that in the period of review a quarter of a million dollars



was spent in sealing road shoulders and associated works such as the raising of kerbs, footpaths, etc., to final levels.

### **Main Roads:**

During the term, Council was fortunate to see the completion of the construction of Silverwater Road from the Silverwater Bridge to Bridge Street, Lidcombe. Whilst some inconvenience was experienced both by vehicular and pedestrian traffic during the work, the disadvantages were well worthwhile when the result was attained.

The next step in the Silverwater Road Programme will be the installation of a new road lighting system, more in keeping with the general improvements of lighting standards throughout the Municipality. With the completion of the roadworks, a distinct hazard has been presented to pedestrians, particularly children, endeavouring to cope with the traffic. This matter is now the subject of negotiation with the Police Traffic Department for an acceptable solution to the problem.

In the period of review Rawson Street was declared a secondary main road to link up with the extension of Boorea Street. Whilst much expenditure is warranted, the matter of improving the road surface of this important traffic route will be spread over a number of years. Considerable expenditure has already been incurred in the section between Northumberland and St. Hilliers Roads.

### **Street Directional Signs:**

This important aspect of public relationship has not escaped Council's attention and during the period \$11,726 were expended.

### **Wentworth and Homebush Bays Area:**

At the present time, Council is negotiating with the Metropolitan Meat Industry Board for the purpose of extending Hill Road into the Homebush Bay area, and in association therewith, subject to the pleasure of the Board, it is anticipated that Council will reclaim vast areas of land by means of the disposal and covering of garbage and trade waste. The development of the Maritime Services Board area has extended with the leasing of areas to Radio Station 2SM and the Electricity Commission, whilst several large industrial factories are in the process of being established.

### **Car Parking:**

The period witnessed vast improvement in the matter of providing additional free off-street car parking facilities,

particularly for the benefit of the general shopping motorists patronising the four commercial centres of the Municipality; \$132,195 were expended in this direction.

The three tier parking station was completed in Susan Street and has proved a boon to the many users. Generally speaking the period saw a vast increase in the number of car parking spaces available throughout the Municipality and covered the residential, commercial and industrial sections. A survey of the industrial areas has shown that over a period Council will be able to develop sites for angle parking on the public roads and this programme is very well illustrated with the parking area made available on the northern side of Fariola Street adjacent to Wilson Park.

### **Tree Planting:**

In its endeavours to beautify the general aspect of the Municipality, Council in its wisdom, established a Tree Planting Gang which was fully occupied in propagating, planting and pruning street trees and also devoted its activities to this work in Council's parks and recreational areas. Whilst the results of the tree planting programmes are not readily apparent, the benefit will be quite evident in the years to come. The Open Space Recreation Areas west of Chisholm Road including the Municipal Golf Course, and the Wyatt Park area have been especially selected for tree planting programmes.

## **RECREATIONAL FACILITIES**

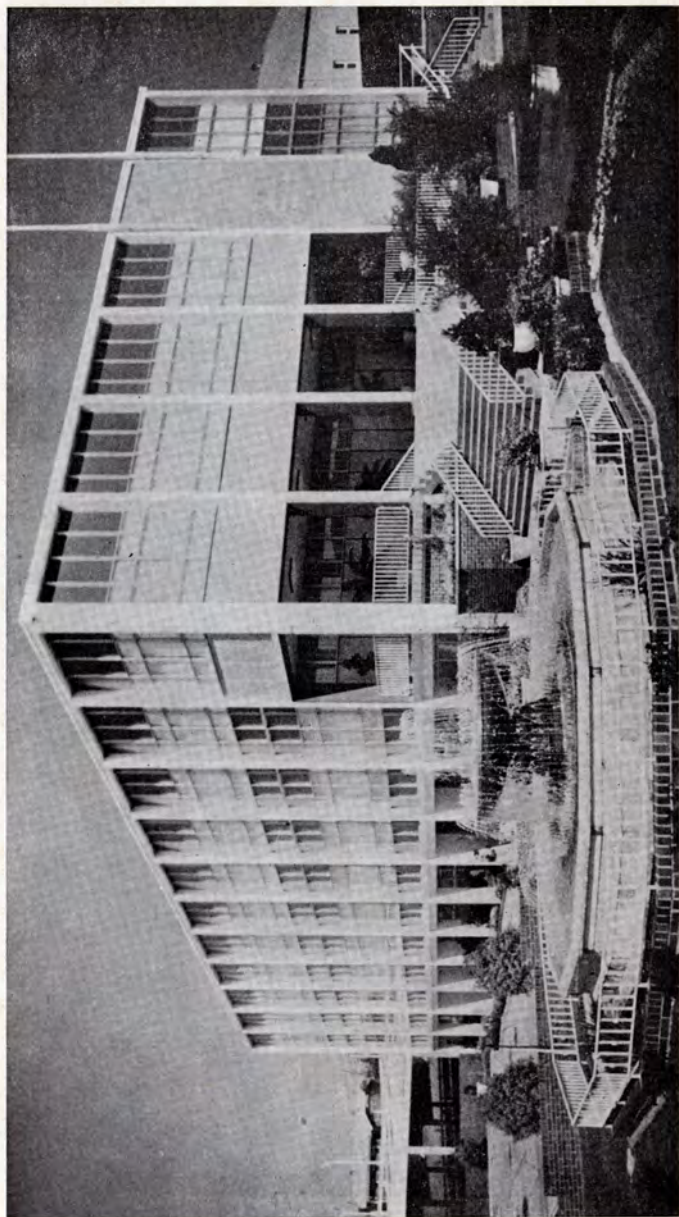
### **Municipal Baths:**

The Municipal Baths, during the period, continued to maintain its patronage. As was expected with the opening of various other pools in adjacent Municipalities, the record attendances have not been maintained, however, it can be said with some justification and pride, that the Municipal Swimming Centre in Wyatt Park, Lidcombe, will be adequate to cater for the wants of this Municipality for many years to come. The activities of the Amateur Swimming Club have ensured that the swimming fraternity is well catered for in the matter of organised "learn to swim" campaigns.

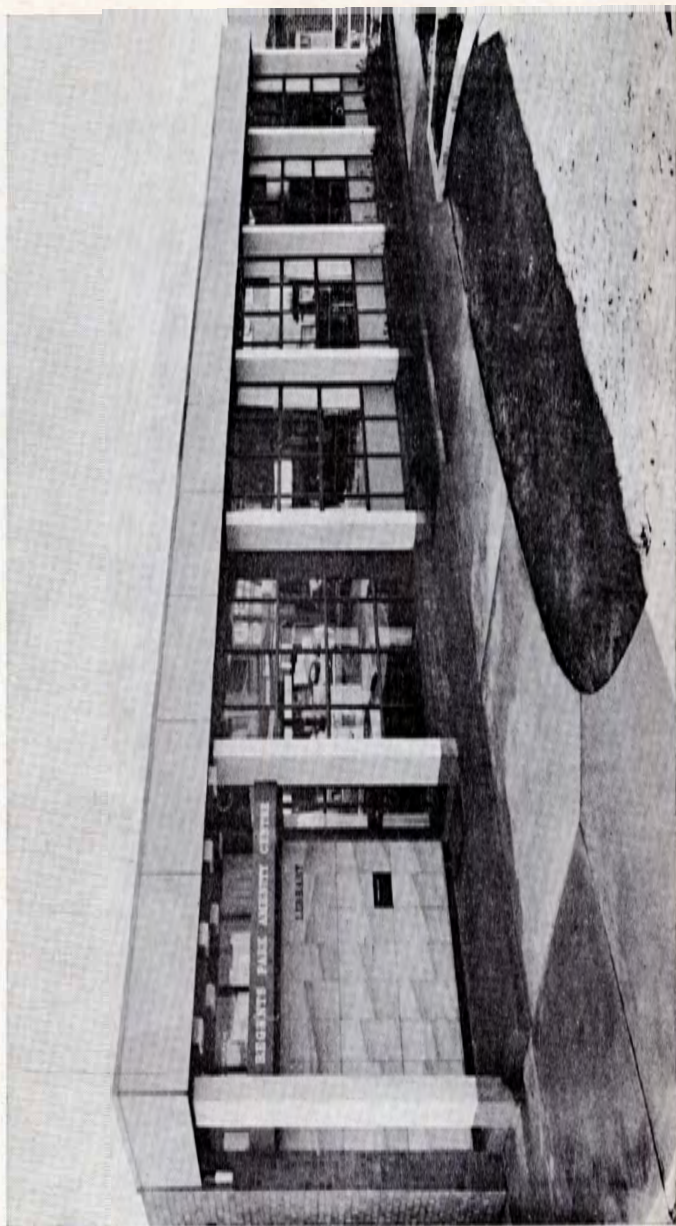
### **Golf Course:**

The Auburn Municipal Golf Course has shown considerable improvement in its overall playing condition in the last three years and in 1968 created new records in green fee revenue.

ADMINISTRATIVE BUILDING



REGENTS PARK AMENITY CENTRE



The cost to the public for playing golf at the Municipal Course has not been increased during this period and green fees are amongst the lowest in the Metropolitan Area.

Many factors have been responsible for the steady development and growing popularity of the golf course during the term and an increasing number of golfers from Auburn and surrounding districts have accordingly made the golf course their home club.

The kikuyu fairways are now well grassed and each spring and summer a turfing and sprigging programme aimed at the elimination of all bare and eroded patches has been undertaken.

The tees, for a Municipal course are adequate, but are being constantly enlarged while tee-ing areas at the side and front of the main tees are also being developed to cope with increasing traffic.

One of the most noticeable course improvements has been the extensive tree planting programme and follow-up maintenance and care has resulted in a very successful project.

The gardens and paths adjacent to the first tee have been the subject of much favourable comment and car parking and barbecue area facilities have been constantly improved.

### **Development of Playing Fields, etc.:**

At this stage of Municipal Development, Council has been able to further develop and consolidate vast areas to playing fields and recreational areas.

With the advent of permanent occupation of Lidcombe Oval by the Western Suburbs Rugby League Football Club, Council was able, by way of advanced contribution, to expend the sum of \$20,000 and completely relay the playing section of the field; in addition, considerable improvements have been carried out to the dressing rooms of the grandstand and facilities available in this direction have been stated to equal the very best in any other field in the Metropolitan area. It is hoped that with the future occupation of the Oval, by the major Rugby League, Council will, by further contributions, make Lidcombe Oval one of the finest grounds in the State.

Of the numerous parks and playing fields, Wilson Park, because of the number of grounds available, was selected for final treatment and there is no doubt that with its numerous soccer fields, tree lined avenues, gardens, picnic area, and shelter sheds, this Park will become a very valuable asset in establishing good public relations since it is situated at the very gateway to the Municipality.

Other playing fields such as Coleman, Phillip, Guilfoyle and Progress Parks, are listed for major work as soon as finances allow.

The Duck River recreation area has been the subject of final planning so much so that in the ultimate, this area will see a full size soccer stadium for all the year round use and playing fields of all descriptions which are designed to cater for the district needs in the various groups of organised sporting activities.

On the land bounded by Chiswick Road, Duck Creek, West Street and Chisholm Road, plans have been prepared for the construction of a village green type of oval with associated rest areas embodying artificial lakes, gardens, covered walks, etc.

In association with the development and use of its recreational areas, Council, under the powers conveyed by the Local Government Act, has sponsored such projects as the Baseballers' Club arena (Oriole Park), recognised as the finest in the southern hemisphere, the Auburn R.S.L. Bowling Club, the Berala-Carramar Tennis Association Club, Rosnay Golf Club, all recently completed, whilst in the past year, an application has been favourably considered from the Liberty Plains Womens' Bowling Club for the purpose of constructing bowling greens for the ladies of the area on land near the Baseball Club in Tavistock Street. This Bowling Club has completed plans for an expenditure of \$100,000 which will eventually allow for three greens, garden beautification and off-street parking.

## HEALTH ADMINISTRATION

### **Mobile Nursing Service:**

During the triennial period 27,659 visitations were made to render treatment to the infirm and chronically ill within their homes.

For the conduct of this important service, Council employs a permanent staff of four (4) qualified Nursing Sisters, with the further employment of casual Nursing Sisters whenever the need arises.

During 1967 the efficiency of the service was increased by the purchase of four (4) "Vauxhall Viva" Sedans for the use of the Sisters.

### **Mobile Blood Bank:**

Again the 12 clinics held over the past three years were well supported and the blood donated was very much appreciated by the Australian Red Cross.

The Society is very grateful to the support given by Council in making the Town Hall available for the clinics to be held and the publicity given, also to the local industries which support the scheme.

Special mention must be made of the Auburn Branch of the Red Cross; this group of dedicated ladies assist in the Clinic, providing the refreshments to the donors and staff without any gratuity.

The demand for blood is increasing daily and Council would appreciate a greater co-operation from business, industrial undertakings and from the many Clubs within the Municipality to maintain the required number of donors to make the visit of the clinic a success.

### **Infectious Diseases:**

Cases notified during the period 1966/1968 —

Infectious Hepatitis	....	....	....	56
Infantile Diarrhoea	....	....	....	4
Pulmonary Tuberculosis	....	....	....	1
Scarlet Fever	....	....	....	2
Viral Hepatitis	....	....	....	1
Salomelosis	....	....	....	1

It is pleasing to report a reduction in the number of cases of notifiable diseases as compared with the number recorded for the previous triennial period. Again during this period no cases of Poliomyelitis or Diphtheria were reported thus indicating the success of the free monthly clinics.

A campaign to eliminate Poliomyelitis by the use of Sabin Oral Vaccine was commenced in May, 1967. Fifteen schools were visited by Council's Staff and Nursing Aids and a total of 19,593 doses of vaccine were administered. It is therefore stressed that all in the community should take advantage of the free monthly clinics for complete courses or booster doses of Sabin Oral Vaccine.

These clinics also administer Triple Antigen (Diphtheria, Whooping Cough and Tetanus) and C.D.T. (Combined Diphtheria and Tetanus) to pre-school children and Diphtheria vaccine for school children up to the age of seven years.

In the triennial period, 55,991 children and adults attended Immunisation clinics held in the Auburn Town Hall.

### **Baby Health Centres:**

Council maintains Baby Health Centres at Auburn, Lidcombe and Regents Park. The Regents Park Centre is in-

corporated with Council's Amenity Centre, the first Clinic being held on Wednesday, May 29, 1968.

During the past three years, 34,200 maternal and baby welfare consultations were given to mothers by the qualified Clinic Sisters. In addition, 3,536 visits were made to homes and hospitals by the Clinic Sisters.

#### **Ladies' Rest Centres:**

Amenities have now been provided in all Shopping Areas of the Municipality by the opening on Saturday, April 20, 1968, of a Ladies' Rest Centre at Regents Park. This Centre which is modern in design is staffed by a lady attendant, such as at Auburn and Lidcombe.

#### **Inspections:**

73,200 inspections were carried out by the Inspectorial Staff of the Health and Building Department, pertaining to health, building and other matters over the past three years.

#### **Sanitary Services:**

With the installation by the Water Board of a Pumping Station at the western end of Fariola Street, Auburn, the sewer has been extended to the whole of the Municipality except a section of Silverwater Road north of Holker Street. The number of services at present being rendered is 65 per week and these are mainly builder's and Departmental construction gang services; these will be further reduced now that Council's policy is to eliminate these services by requiring that a temporary sewerage connection be made prior to commencement of building operations.

#### **Garbage Services:**

Council now provides a bi-weekly garbage collection service to all residents within the Municipality, and to cater for this, the garbage collection fleet of vehicles has been increased to five. The vehicles are of modern enclosed type.

A further daily service is rendered to all business and industrial undertakings when and as required.

In the past three years over twenty acres of unsuitable land along the banks of the Duck River have been reclaimed for Sporting Fields by the disposal of 500,000 cubic yards of garbage, trade waste and clean up rubbish.

Council operates a weekly rubbish removal service each Wednesday, and the Waste Disposal Depot at Chiswick Road is open from 7.30 a.m. to 2 p.m. Monday to Friday, and





His Worship the Mayor  
of Auburn  
ALD. S. L. HEDGES, J.P.



His Worship the Mayor, Ald. S. L. Hedges, J.P., in the Chair,  
(Town Clerk); E. W. Black, A.M.I.E. (Engineer/Town Planner);  
Gray, J.P.; Ald. J. Fowler, J.P.; Ald. R. J. Fitzpatrick, J.P.;  
Ald. F. D. Smith, J.P.; Ald. J. A. MacArthur; Ald. L. Meakin,  
McIntosh, M.R.S.H. (Lond.), M.I.H.S. (Deputy Health Surveyor);  
Absent: A. P. Hayes, J.P., F.I.H.

MUNICIPALITY OF AUBURN — COUNCIL IN SESSION



His Worship the Mayor, Ald. S. L. Hedges, J.P., in the Chair, then reading anti-clockwise: G. J. Lane, J.P., A.L.C.A., A.I.M.A. (Town Clerk); E. W. Black, A.M.I.E. (Engineer/Town Planner); Ald. C. G. Noble, J.P.; Ald. F. T. Meehan, J.P.; Ald. J. Gray, J.P.; Ald. J. Fowler, J.P.; Ald. R. J. Fitzpatrick, J.P.; Ald. S. G. Bradburn; Ald. A. L. Wilson, J.P. (Deputy Mayor); Ald. F. D. Smith, J.P.; Ald. J. A. MacArthur; Ald. L. Meakin, J.P.; Ald. A. R. Hunt, J.P.; Ald. D. R. Stammers, J.P.; R. R. McIntosh, M.R.S.H. (Lond.), M.I.H.S. (Deputy Health Surveyor); C. Goldsworthy, J.P., A.L.C.A., A.I.M.A. (Deputy Town Clerk).  
Absent: A. P. Hayes, J.P., F.I.H.S. (Aust.) (Health Surveyor).

— COUNCIL IN SESSION



then reading anti-clockwise: G. J. Lane, J.P., A.L.C.A., A.I.M.A.  
Ald. C. G. Noble, J.P.; Ald. F. T. Meehan, J.P.; Ald. J.  
Ald. S. G. Bradburn; Ald. A. L. Wilson, J.P. (Deputy Mayor);  
J.P.; Ald. A. R. Hunt, J.P.; Ald. D. R. Stanmore, J.P.; R. R.  
C. Goldsworthy, J.P., A.L.C.A., A.I.M.A. (Deputy Town Clerk).  
.S. (Aust.) (Health Surveyor).

REGENTS PARK LIBRARY



over the weekend between 8 a.m. and 12 noon for the benefit of residents of the Municipality. However, considerable expense is still being incurred by the removal of rubbish dumped in the streets and reserves, and it has now been resolved that all offenders will be prosecuted by Court action.

### **Dog Registrations:**

From October 1, 1966 Council has been responsible for the registration of all dogs within the Municipality.

Since that date 10,502 dogs have been registered and registration fees amounted to \$12,254.32.

During the period in which the Dog Act has been enforced 1,085 stray dogs were collected and impounded at the R.S.P.C.A. King Edward VII Dogs' Home, Waterloo Road, Moore Park.

### **Air Pollution Control:**

Though the Clean Air Act is administered by the Department of Public Health, Division of Occupational Health, Council co-operates with the Department in so much that it reports all complaints and collects fall-out dust samples from various sections of the Municipality at regular intervals.

Existing scheduled premises are constantly visited by the Department's Inspectors recommending modification to plant, for the purpose of reducing atmospheric pollution. However, it is in the construction of new industrial undertakings where the problem of atmospheric pollution can be most expeditiously and efficiently controlled, and with each new application for such development Council insists that all plant to be installed must comply with the requirements of the Clean Air Act.

### **Argentine Ants:**

It is pleasing to report that the Argentine Ant pest has been practically eliminated from the Municipality, however the Argentine Ant Eradication Committee carries out periodical checks to make certain no fresh outbreaks occur.

The Council still co-operates fully with the Committee and the public are advised to forward to Council samples of ants of which they may be suspicious. By this action, any fresh outbreaks can be readily eliminated.

### **Berala Play Centre:**

Council co-operated with the National Fitness Council in maintaining a National Vacation Play Centre at the Berala

Public School during the latter portion of the Christmas vacations.

By agreement, Council supplied all the necessary equipment for Sport and Handicraft activities, which was supervised by qualified Supervisors from the Department of Physical Education.

The average enrolment at the Centre each year was 275 with an average attendance of approximately 200.

**Buildings:**

Year	No. Applications	Value	Fees Paid
1966	737	\$7,165,601	\$12,103.76
1967	817	\$7,068,010	\$16,483.87
1968	728	\$6,439,082	\$10,200.25

Of the applications received there were:

131 New Dwellings	.....	total value	\$1,144,000
117 New Flats and Home Units	.....	„ „	\$3,870,399
72 New Factories	.....	„ „	\$5,345,396
Alterations/additions to factories and dwellings	.....	„ „	\$10,312,898

Though the construction of domestic dwellings have decreased, the number of flats and home units have shown a marked increase.

**Licences:**

2,521 Licences were issued during the period and fees paid totalled \$5,417 and over 9,000 inspections of the various premises were carried out.

**Legal Proceedings:**

Thirty-six cases were instituted for various breaches of the Local Government Act, Public Health Act, Pure Food Act and Ordinances, and fines and costs totalling \$1,112 were awarded.

**PUBLIC SERVICES**

**Library Services:**

The Municipal Library Service has expanded and developed still further in the three years since the last report. At the end of 1965 the total membership of the library service was 14,472 borrowers; the total book-stock was 39,350 volumes. By the middle of 1968 the total membership of the libraries was 18,975 borrowers; the total book-stock was 52,344 volumes

and the annual issue of books for 1968 will probably be in the vicinity of 35,000 volumes.

On April 22nd, 1968, a Branch Library was opened at Regents Park as part of an Amenities Centre, comprising Women's Rest Centre, Baby Health Centre and Public Library. The entire block is of a very pleasing, modern design and the library has large windows opening on to a garden at the front of the building. The library is large enough to provide plenty of space even at the busiest times and a study room has been incorporated in the design.

The unplastered brick walls and the dark wood of the shelving and furniture provide very attractive and restful surroundings for reading purposes.

Now that the Auburn Municipal Library Service consists of three libraries it is possible to provide a better service for most of the population. The number of borrowers is still increasing and we now have a large number of non-residents using the libraries. Regular class visits by local schools are paid to all three libraries and story-times are most popular. Displays and exhibitions by various local groups and societies have been arranged and the painting section of the Auburn Arts Group meets in a room above Auburn Library each week. Co-operation with local schools, societies and business people is good and the library services try to fit in with the community and its needs. The Reference stock at each library is well used by students of all ages and by business people and housewives. Books which are requested, but which, for various reasons we are not able to purchase, can be borrowed from other municipal libraries, this Inter-Library Loans Scheme has expanded rapidly over the past three years.

This is a "Library conscious" community and the staff of the libraries will do their best to encourage this outlook in the future.

### **Civil Defence Organisation:**

A local Civic Defence Headquarters has been established to train and instruct local residents in the organisation of Civil Defence in Australia to meet the threat of attack with nuclear weapons or any natural emergency. The measures adopted for meeting the dangers of nuclear attack are equally appropriate to meet the threat of attack with conventional weapons.

Civil Defence is developing rapidly in Australia and voluntary Civil Defence Forces are more and more being called upon to provide assistance in natural disasters such as floods, fires, cyclones and local accidents. The trained, organised and



equipped Civil Defence Services which are springing up in districts, shires and municipalities are becoming a national asset.

Rooms, furniture and equipment have been made available by the Auburn Council in the Town Hall, Lidcombe, where training of local citizens in the various sections of the Civil Defence Organisation is conducted. The Council supports the organisation and recommends to all residents of this area the experience and knowledge which is available in the various fields of Civil Defence.

Further information may be obtained by contacting your Local Municipal Council.

The Local Controller, Mr. R. A. Bainbridge, may be contacted at the Council Chambers, Auburn, or the Town Hall, Lidcombe.

### **Town Planning:**

The triennial period saw further progress with the Auburn Municipal Planning Scheme which reached the Minister's Exhibition stage and was exhibited for public consideration for the purpose of lodging objections from the 21st November, 1966, to the 24th February, 1967.

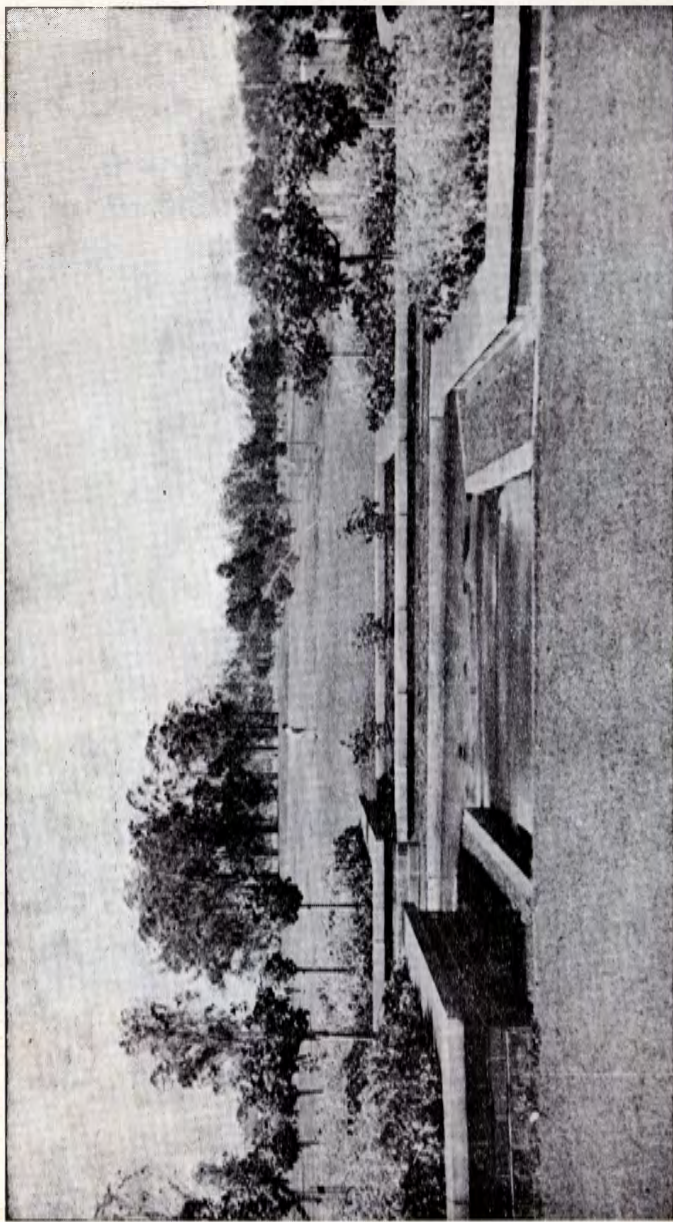
Altogether, 195 objections were lodged by the general public, 57 by Auburn Council and 2 by Parramatta City Council. Commissioner, Mr. G. Ross, Shire Engineer of Hornsby Shire Council, heard the objections in the Council Chambers and at present his report is before the Minister for Local Government for decision.

The main objections by Council were centred around the proposed Residential "2C" zone since the Aldermen of Council, after considering a report from its Town Planner, decided that this new residential zone would cater for a definite need and allow for special redevelopment by way of a "Villa" type home, flat conversion, etc.; in some existing residential areas.

With the finalisation of the local scheme, the future development of the Municipality should be both progressive and orderly with residential "A" areas being specially reserved for the quiet enjoyment of living, undisturbed by the intrusion of factory, commercial and/or high density development.

A great number of public objections, particularly as applying to high density and industrial zonings, were really objections against rating and not zoning; in regard to these aspects, owners face vastly increased valuations and consequent rate

MUNICIPAL GOLF COURSE



INDUSTRIAL AREA — ANGLE PARKING  
Fariola Street, North Lidcombe.



increases and should seek further information from Council's office concerning eligibility for postponement of rates under Section 160C of the Local Government Act.

### **Naturalisation Ceremonies:**

During the triennial term, the policy of the Department of Immigration in holding local Naturalization Ceremonies, was continued. Approximately 540 people took the Oath of Allegiance to Her Majesty the Queen before His Worship the Mayor. The total number of candidates representing local new Australians who have been Naturalized within the Municipality since the inception of these Ceremonies, is 2233 people who have been accepted by the residents and have quickly and firmly established themselves within the community.

To these new Australians, I would, on behalf of the Council, like to state that we extend a warm hand of friendship and look forward with expectation, to their participation in the civic, social, industrial and commercial activities of this Municipality.

### **Street Lighting:**

Street lighting charges for the period totalled \$228,996; this figure speaks for itself and is indicative of the fact that the present Council actively endorsed a policy of greatly improving the street lighting system throughout the Municipality.

The annual street lighting charge of approximately \$80,000 represents considerable expenditure from the annual income for this public amenity, however, in Council's opinion it is an essential requirement that adequate illumination be provided in the public thoroughfares for the joint benefit of both the pedestrian and the motorist.

Under an amendment to the Electricity Act, 1945/63, the Electricity Authority of New South Wales was granted powers to promote, extend and improve the lighting of public roads for the purpose of achieving a reduction in the number of road accidents.

As a result of this amendment, Council requested the Sydney County Council to investigate and report on the costs involved in bringing the street lighting of the Municipality, to a standard which would be acceptable to the Electricity Authority for inclusion in the street lighting subsidy scheme.

Since receiving the report, Council has endorsed and authorised improved street lighting in various sections of the Municipality and continuation of this policy will ensure

that within a short time, the standard of lighting will be equal to the best in the State.

Particular reference is made to the proposed undergrounding of mains in the shopping centre; as a preliminary in this direction, the mains have been grounded in Auburn Township and will, at a later date, be extended to other centres. Whilst much confusion, noise and inconvenience to the shopkeepers and residents alike was associated with this work, it is felt that the temporary inconvenience will be far outweighed when the multitudinous poles and miles of wiring which are an eyesore, have been removed.

### **Building Activities:**

Special mention must be made of the undermentioned building projects which were completed within the term:

The renovation and alterations to the Auburn Town Hall at a cost of \$214,931.

The erection of the new Amenity Centre at Regents Park comprising Library, Womens' Rest Centre and Baby Health Centre, at a cost of \$81,032.

The erection of a Youth Centre at Wyatt Park in conjunction with the two R.S.L. Sub-branches, involving expenditure of \$130,000.

The latter project will provide a long needed amenity to cater for the youth of the district; for some years the local Sub-branches have been active in promoting youth interest and this Centre will provide the necessary and adequate accommodation to allow the Youth Committee to properly organise its activities and provide the correct supervision and organisation of youthful pursuits. Over the years the wonderful work which will be done in this Centre will no doubt be reflected in a worthwhile manner in the reduction of juvenile misbehaviour and delinquency.

### **Meals on Wheels:**

Under the auspices of the Senior Citizens' Welfare Association, upon which Council is well represented by the Mayor, Aldermen and Staff, a voluntary committee was established, for the purpose of organising a daily Meals on Wheels Service.

The first meals were delivered on the 30th May, 1966, when 24 people received the meal, since then a voluntary committee has done yeoman service and at date, is delivering

as many as 61 meals per day. The restriction of the number of meals is not that the demand is lacking but is related to the fact that the number of helpers, with or without cars, are restricted. It would be safe to say that if double the number of helpers were available on the existing voluntary basis of a minimum of 1 day's service each month, then the daily issue of meals would be equally doubled to satisfy the demand. Under the present arrangement, it is often necessary to stagger meals to such an extent that some aged people receive meals every day whilst others not so much in need, receive them twice or three times each week. The Mobile Nursing Service conducted by Council, plays a very important part in managing and recommending the supply of meals.

Each day, Monday to Friday, six cars with assistants, conduct the various runs. The helpers gather at the Senior Citizens' Centre in Tavistock Street at 11.30 a.m. and over morning tea, particulars are supplied as to patients, areas, addresses and the like. The meals are collected at the Auburn District Hospital at 12 noon; the meals are delivered, the utensils are washed at the Senior Citizens' Centre and returned to the hospital for the next day's activities. The deliveries are so regulated that all helpers should be finished before 2 p.m.

Any person reading this article who would be charitable enough to sacrifice some of their personal time and assist in this marvellous work, should ring the Senior Citizens' Centre between 11 a.m. and 1.30 p.m. (637-6123) and contact the Roster Clerk. The joy and thanks which are expressed by the aged and sick people who receive the meals is indeed very rewarding and the good ladies who help in this work leave no stone unturned towards bringing some happiness each day in the life of people who, because of age and/or infirmity, are unable to fend for themselves.

From an annual distribution of 11,000 meals in the first year, the number has steadily increased, so that in 1968, it is anticipated that the annual delivery will be in the vicinity of 14,000. The Council of the Municipality of Auburn would like to take this opportunity of expressing sincere thanks to the good ladies and helpers who so magnificently are co-operating in this voluntary work.

## **CONCLUSION:**

It is again my pleasure to acknowledge the cordial relationship which has continued to exist between the Auburn Municipal Council and the many Clubs, Associations, Committees and the like; this state of affairs is indicative of a very progressive and active society within our Municipality.

I acknowledge with gratitude the co-operation of our members of Parliament and the respective Government Departments and Statutory bodies with which Council, every day, has contact in its functioning. I also pay tribute to the various groups such as Hospital Boards, P. & C. Associations, School and Club Committees and all who in their own particular sphere play a most important part in promoting community interest and development.

The staff of Council have responded admirably to the many calls upon their time during a particularly busy triennial period and the Aldermen and myself express our personal appreciation of the loyalty and efficiency which has characterised their duty.

The Local Government (Elections) Amendment Bill of 1968 recently passed by both Houses of the State Parliament, has drastically altered the procedures for Local Government Elections. The new Legislation repealed the sections of the Local Government Act allowing for the election of the Mayor by popular vote, eliminated compulsory voting and introduced a system of preferential counting in lieu of proportional representation.

Under these new provisions, the electors of the Municipality have perhaps a greater responsibility to be interested in Council activity and also in the matters of casting their vote on election day. The conduct of the affairs of the Municipality is today big business and as the Municipal rolls provide for the enrolment of both ratepayers and residents alike, it behoves every elector to visit the polling booth on election day and register his vote for, in so doing, he will ensure for all times, that Municipal and Shire Council control will remain in the hands of Aldermen and Councillors who are elected by the majority of the people on the basis that they are considered to be competent to hold and efficiently discharge an appointment of trust.

## FACTS FOR GENERAL INFORMATION

### Council Telephones:

Office 649-6011; 649-6012; 649-6013; 649-6014; 649-6015;  
649-4413.

Swimming Centre 649-9125; 649-4876.

Public Golf Course 649-9972

Municipal Libraries — Auburn 649-4815; Lidcombe 649-9387;  
Regents Park 644-7558.

Baby Health Centres — Auburn 649-8621; Lidcombe 649-7941;  
Regents Park 644-7540.

Civil Defence 649-6331.

### Postal Address:

All correspondence should be addressed to the Town Clerk,  
Municipality of Auburn, Box 118, P.O., Auburn, 2144, or  
Council Chambers, Auburn.

Office Hours: 9 a.m. to 4 p.m. Mondays to Fridays.

Electors enrolled — 30,310.

Area of parks and reserves — 348 acres.

### Baby Health Centres:

Auburn — Monday to Friday: 9 a.m. to 1 p.m. and 2 p.m.  
to 5 p.m.

Lidcombe — Tuesday, Thursday and Friday: 9 a.m. to 1  
p.m. and 2 p.m. to 5 p.m.

Regents Park — Monday: 9 a.m. to 1 p.m.; Wednesday: 9  
a.m. to 1 p.m. and 2 p.m. to 5 p.m.

Womens' Rest Centres, Auburn, Lidcombe and Regents Park:  
Mondays to Thursdays: 9 a.m. to 5 p.m.  
Friday: 8.30 a.m. to 5.30 p.m.  
Saturdays: 8 a.m. to 12 noon.

### Local Mobile Nursing Service:

This service is located in the Council's Administrative  
Building, Susan Street, Auburn, and can be contacted by  
ringing 649-6011, Health Department, during ordinary office  
hours.



### **Municipal Libraries:**

Auburn: Mondays to Fridays 10 a.m. to 8 p.m. — Saturdays 9.30 a.m. to 12 noon.

Lidcombe and Regents Park: Mondays, Wednesdays and Fridays 10 a.m. to 8 p.m. — Tuesdays and Thursdays 10 a.m. to 6 p.m. — Saturdays 9.30 a.m. to 12 noon.

### **Swimming Centre, Wyatt Park, Lidcombe:**

Swimming season October 1 to March 31 (tentative).

Hours open to the public:

Mondays to Saturdays 6 a.m. to 6 p.m.

Sundays 6 a.m. to 5 p.m. — 6 a.m. to 7 p.m. during the months of December, January and February.

Night bathing: December, January & February, Mondays to Fridays 6 p.m. to 9 p.m.

The Centre is available for carnivals.

### **Municipal Golf Course:**

Open every day except Christmas Day.

### **Parking Facilities for Shoppers:**

All main shopping centres are subject to the half-hour parking restrictions. Adequate car parking facilities are available in Auburn, Lidcombe and Berala. Accommodation for approximately 850 vehicles is available at the under-mentioned sites at all hours:

Susan Street adjoining the public school and at the corner of Queen Street.

Kerr Parade — Railway overbridge to Marion Street — angle parking.

North Parade — Railway overbridge to St. Hilliers Road — angle parking.

South Parade between Railway Station and western overbridge.

Queen Street between Auburn Road and Harrow Road adjacent to the Royal Hotel.

Church Street, Lidcombe, between Olympic Drive and Railway Station — angle parking.

Bridge Street, Lidcombe, at rear of hotel.

Off New Street adjacent to Bridge Street.

Berala Shopping Centre.

Mary and John Streets, Lidcombe at rear of Court House.

Amy Street, Regents Park, at rear of shops, entrance from Regent Street.







---

Printed by Bushell Press Pty. Ltd.  
79 Silverwater Road, Auburn  
Phone 648-2531 (3 lines)

---